

SYLMAR CHARTER HIGH SCHOOL

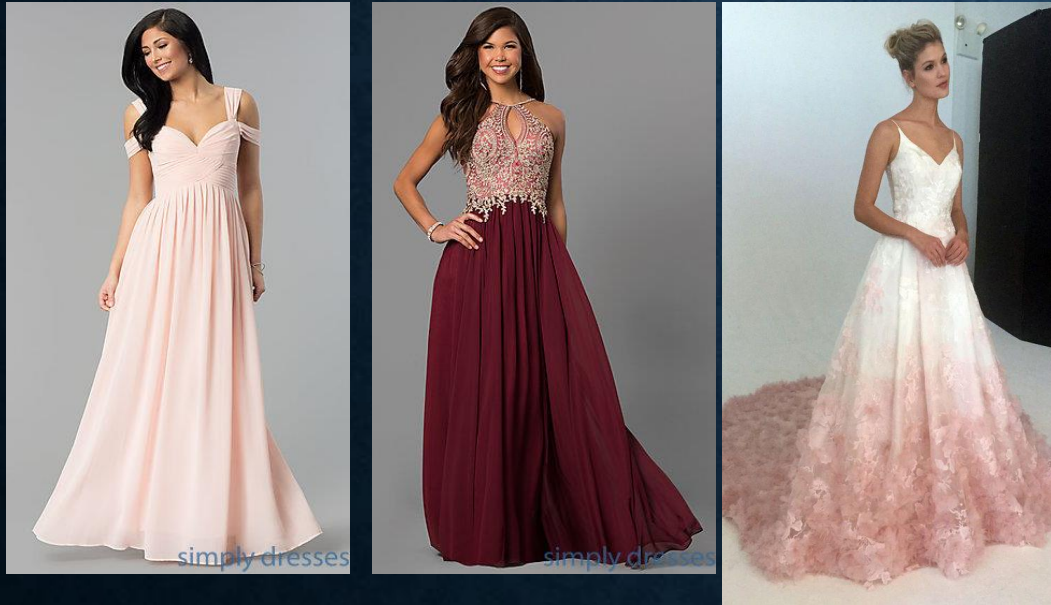
Dance Dress Code

WOMEN

#1

DRESSES MAY NOT BE CUT BELOW THE BUST LINE. THE BUST CONTINUES AROUND YOUR SIDES DIRECTLY UNDER THE ARMPIT. WITH THE ARMS DOWN AT YOUR SIDES, IF FLESH TOUCHES FLESH BELOW THE BUST LINE, THE DRESS IS INAPPROPRIATE.

Meets dress code



Does not meet dress code



#2

DRESSES MAY BE BACKLESS AS LONG AS THEY ARE NOT CUT BELOW THE NAVEL OR SHOW THE CREVICE OF THE BACKSIDE.

Meets dress code



Does not meet dress code



#3

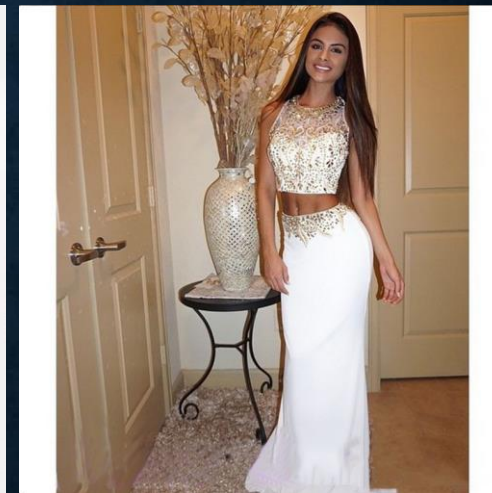
MIDRIFTS WILL NOT BE EXPOSED. THIS INCLUDES BOTH FRONT AND SIDE AND CUTOUTS*. WITH THE ARMS DOWN AT YOUR SIDE, IF FLESH TOUCHES FLESH IN THE MIDRIFF SECTION, THE DRESS IS INAPPROPRIATE.

Meets dress code



*Cutouts with flesh colored backing is acceptable.

Does not meet dress code



#4

**DRESSES MAY NOT HAVE A SLIT OR WHOLE DRESS THAT EXCEEDS MID-THIGH.
THAT IS FINGERTIP LENGTH.**

Meets dress code



Does not meet dress code



MEN

#1

PANTS SHALL BE EITHER SUIT OR TUXEDO QUALITY. NO JEANS, CASUAL OR TORN PANTS ALLOWED

Meets dress code



Does not meet dress code



#2

SPORT OR CASUAL SHOES ARE NOT ALLOWED

Meets dress code



Does not meet dress code



#3

YOUNG MEN ARE TO BE CLEAN SHAVEN, ARE NOT TO WEAR ANY HATS OR EXCESSIVE JEWELRY.

Meets dress code



Does not meet dress code



#4

SUITS SHALL FIT SO THAT NOT TOO TIGHT TO SHOW BODY IMPRINTS OR TOO LOOSE TO HANG OFF.

Meets dress code



Does not meet dress code

